

Cell Line Data Sheet for COG-N-615

Cell Line Name: COG-N-615

Disease: Neuroblastoma
Phase of Therapy: Diagnosis
Treatment: ANBL00B1 (20160121), APEC14B1 (20160201)
Disease Stage: 4
Source of Culture: Post-Mortem Blood
Primary Tumor Site:
Date Established: April 2016 (surgery January 2016)

MYCN Status:
TH expression:
p53 status:

Gender:
Age:
Race: NA

Growth Conditions: Please see Protocols section at <https://www.cccells.org/protocols.php>
 5% CO₂, 20% O₂, 37.0°C

Media Formulation: Please see Protocols section at <https://www.cccells.org/protocols.php>
 Cells are grown in a base medium of Iscove's Modified Dulbecco's Medium plus the following supplements (to a final concentration):
 20% Fetal Bovine Serum, 4mM L-Glutamine,
 1X ITS (5 µg/mL insulin, 5 µg/mL transferrin, 5 ng/mL selenous acid)

Doubling Time: 20%O₂ – hours 5%O₂ – 117 hours 2%O₂ – hours

Morphology:
Growth Properties

STR Profile: May be obtained at <https://strdb.cccells.org/>

Notes: The Childhood Cancer Repository has a matching hypoxic cell line grown at 5% O₂ available from this same patient – COG-N-615h.
 The Childhood Cancer Repository has a matching hypoxic cell line grown at 2% O₂ available from this same patient – COG-N-615h2.
 The Childhood Cancer Repository has a matching PDX available from this same patient – COG-N-615x.

Cell Line Data Sheet for COG-N-615

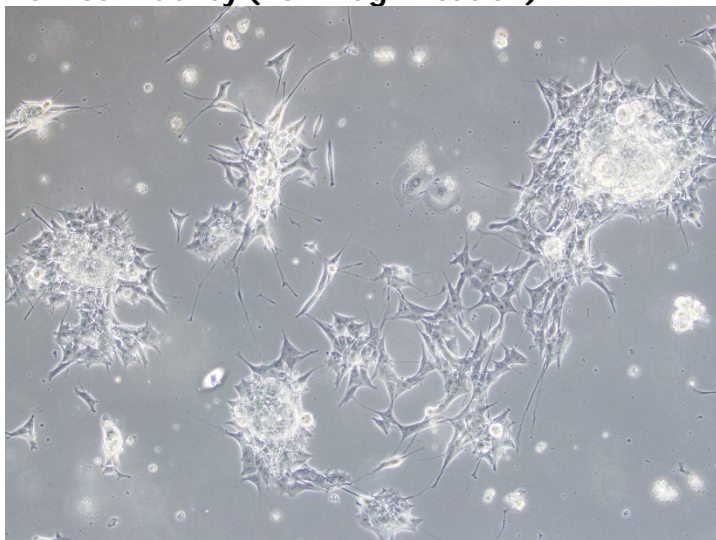
Cell Line Name: COG-N-615

References:

Cell Line Data Sheet for COG-N-615

Cell Line Name: COG-N-615

Low confluency (10x magnification)



Low confluency (10x magnification)

