

Cell Line Data Sheet for COG-N-561

Disease:	Neuroblastoma
Phase of Therapy:	Progressive disease, post mortem
Treatment:	ANBL00B1
Disease Stage:	4
Gender:	Female
Age at diagnosis:	20 months
Race:	N/A
Age at sample collection:	N/A
Source of Culture:	Blood
Primary Tumor Site:	Retroperitoneum
Date Established:	February 2015
MYCN Patient:	Amplified
MYCN Cell line:	N/A
TH mRNA:	Expressed
p53 functionality:	N/A
Telomere Mechanism	N/A
ALK:	N/A
RNAseq:	N/A
WES:	N/A
IC90 (DIMSCAN*):	N/A
Growth Conditions:	Please see Protocols section at https://www.cccells.org/protocols.php 5% CO ₂ , 20% O ₂ , 37.0°C; 5% CO ₂ , 5% O ₂ , 37.0°C; 5% CO ₂ , 2% O ₂ , 37.0°C
Media Formulation:	Please see Protocols section at https://www.cccells.org/protocols.php Cells are grown in a base medium of Iscove's Modified Dulbecco's Medium plus the following supplements (to a final concentration): 20% Fetal Bovine Serum, 4mM L-Glutamine, 1X ITS (5 µg/mL insulin, 5 µg/mL transferrin, 5 ng/mL selenous acid)
Doubling Time:	20% O ₂ -103 hours 5% O ₂ -124 hours 2% O ₂ -99 hours
Growth Properties:	Adherent
STR Profile:	May be obtained at https://strdb.cccells.org/
Notes:	The Childhood Cancer Repository has a matching hypoxic cell line grown at 5% O ₂ available from this same patient – COG-N-561h. The Childhood Cancer Repository has a matching hypoxic cell line grown at 2% O ₂ available from this same patient – COG-N-561h2. There is a matching PDX also available from this same patient – COG-N-561x

All cell lines are antibiotic-free, mycoplasma-free, and cryopreserved in 50% FBS / 7.5% DMSO. Each vial label contains the cell line name, passage number, total viable cell count (usually 5-10e6), the overall cell viability, and date frozen. All cell lines are validated with original patient sample by STR analysis.



Cell Line Data Sheet for COG-N-561

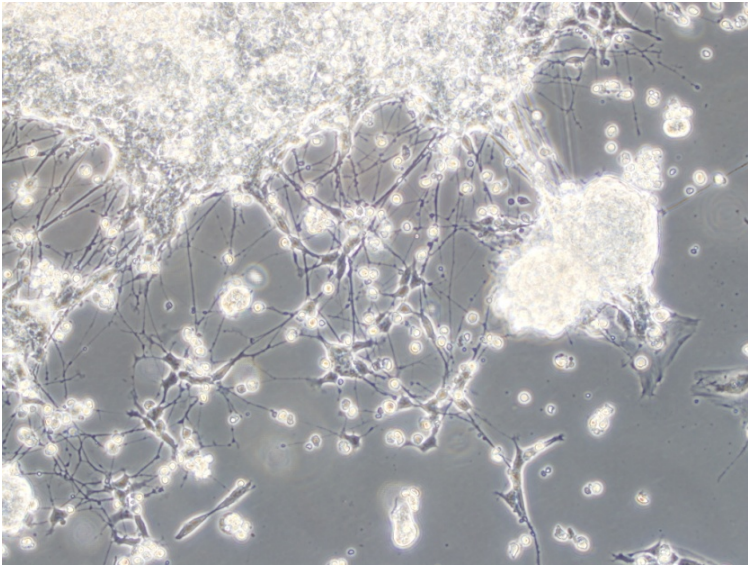
References:

1. J. L. Harenza, M. A. Diamond, R. N. Adams, M. M. Song, H. L. Davidson, L. S. Hart, M. H. Dent, P. Fortina, C. P. Reynolds, J. M. Maris, Transcriptomic profiling of 39 commonly-used neuroblastoma cell lines. *Sci Data*. 2017;4:170033. PMID: 2835038
<https://www.ncbi.nlm.nih.gov/pmc/articles/PMC5369315/>



Cell Line Data Sheet for COG-N-561

(20x magnification)



(20x magnification)

