

Cell Line Data Sheet for CHLA-253

Disease:	Neuroblastoma
Phase of Therapy:	Progressive disease
Treatment:	N/A
Disease Stage:	N/A
Gender:	Male
Age at diagnosis:	NA
Race:	N/A
Age at sample collection:	N/A
Source of Culture:	Tumor
Primary Tumor Site:	N/A
Date Established:	N/A
MYCN Patient:	Amplified
MYCN Cell line:	N/A
THmRNA:	Expressed
p53 functionality:	N/A
Telomere Mechanism:	N/A
ALK:	WT
RNAseq:	N/A
WES:	N/A
IC90 (DIMSCAN*):	N/A
Growth Conditions:	Please see Protocols section at https://www.cccells.org/protocols.php 5% CO ₂ , 20% O ₂ , 37.0°C
Media Formulation:	Please see Protocols section at https://www.cccells.org/protocols.php Cells are grown in a base medium of Iscove's Modified Dulbecco's Medium plus the following supplements (to a final concentration): 20% Fetal Bovine Serum, 4mM L-Glutamine, 1X ITS (5 µg/mL insulin, 5 µg/mL transferrin, 5 ng/mL selenous acid)
Doubling Time:	N/A
Growth Properties:	Adherent and floating
STR Profile:	May be obtained at https://strdb.cccells.org/
Notes:	The Childhood Cancer Repository has a matching cell line available from this same patient – CHLA-247.

All COG Repository cell lines are antibiotic-free, mycoplasma-free, and cryopreserved in 50% FBS / 7.5% DMSO. Each vial label contains the cell line name, passage number, total viable cell count (usually 5-10e6), the overall cell viability, and date frozen. All cell lines are validated with original patient sample by STR analysis



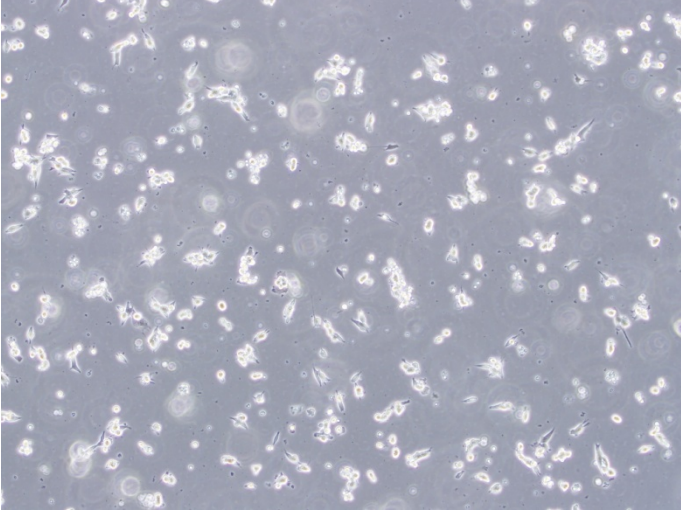
Cell Line Data Sheet for CHLA-253

Cell Line Name: CHLA-253

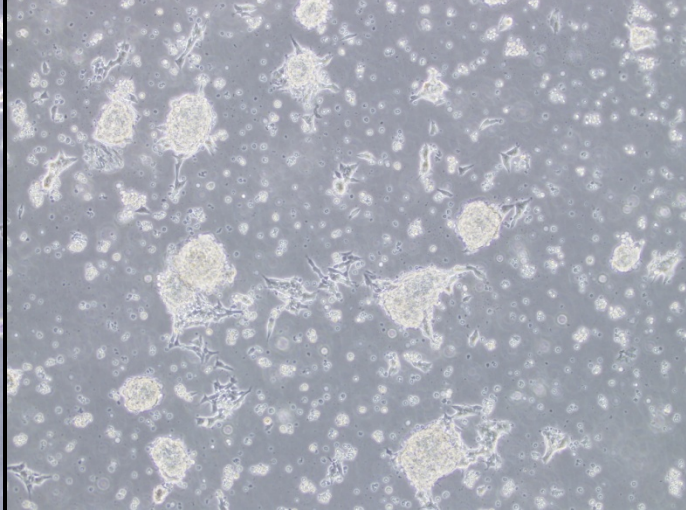
References:

Cell Line Data Sheet for CHLA-253

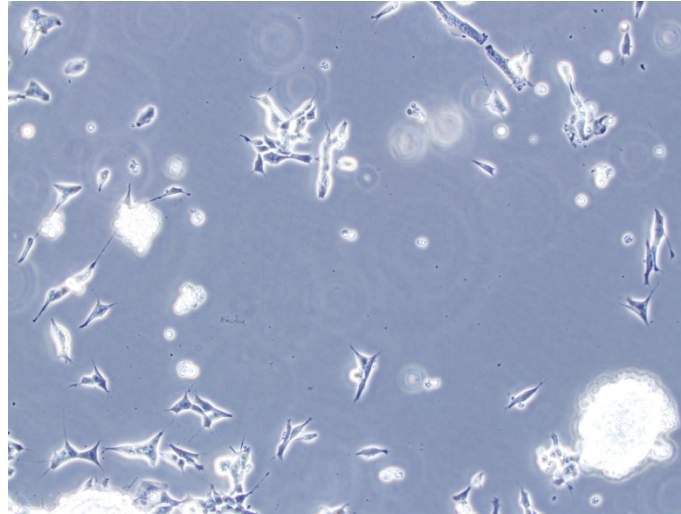
(10x Magnification)



(10x Magnification)



(20x Magnification)



(20x Magnification)

