



Cell Line Data Sheet for CHLA-144

Disease:	Neuroblastoma
Phase of Therapy:	Diagnosis
Treatment:	N/A
Disease Stage:	4
Gender:	Female
Age at diagnosis:	N/A
Race:	N/A
Age at sample collection:	N/A
Source of Culture:	Bone Marrow
Primary Tumor Site:	N/A
Date Established:	N/A
MYCN Patient:	Amplified
MYCN Cell line:	N/A
TH mRNA:	Expressed
p53 functionality:	N/A
Telomere Mechanism	N/A
ALK:	WT
RNAseq:	N/A
WES:	N/A
IC90 (DIMSCAN*):	N/A
Growth Conditions:	Please see Protocols section at https://www.cccells.org/protocols.php 5% CO ₂ , 20% O ₂ , 37.0°C
Media Formulation:	Please see Protocols section at https://www.cccells.org/protocols.php Cells are grown in a base medium of Iscove's Modified Dulbecco's Medium plus the following supplements (to a final concentration): 20% Fetal Bovine Serum, 4mM L-Glutamine, 1X ITS (5 µg/mL insulin, 5 µg/mL transferrin, 5 ng/mL selenous acid)
Doubling Time:	N/A
Growth Properties:	Adherent, some floating
STR Profile:	May be obtained at https://strdb.cccells.org/
Notes:	The Childhood Cancer Repository has a matching direct-to-culture diagnosis cell line available from this same patient – CHLA-145. The repository has a matching EBV lymphoblastoid cell line – COG-V-435.

All COG Repository cell lines are antibiotic-free, mycoplasma-free, and cryopreserved in 50% FBS / 7.5% DMSO. Each vial label contains the cell line name, passage number, total viable cell count (usually 5-10e6), the overall cell viability, and date frozen. All cell lines are validated with original patient sample by STR analysis



Cell Line Data Sheet for CHLA-144

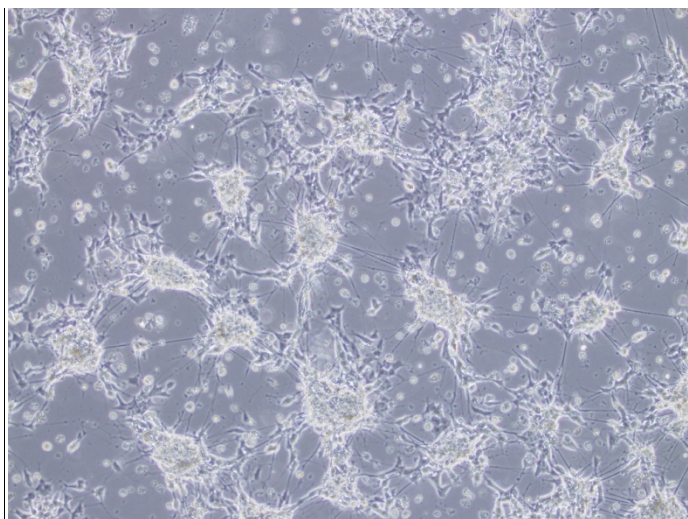
Cell Line Name: CHLA-144

References:

Cell Line Data Sheet for CHLA-144

Cell Line Name: CHLA-144

(10x Magnification)



(20x Magnification)

