

Cell Line Data Sheet for CHLA-44

Disease: Neuroblastoma
Phase of Therapy: Diagnosis
Treatment: N/A
Disease Stage: 4
Gender: Male
Age at diagnosis: N/A
Race: N/A
Age at sample collection: N/A
Source of Culture: Bone Marrow
Primary Tumor Site: N/A
Date Established: May 1989

MYCN Patient: N/A
MYCN Cell line: N/A
THmRNA: Expressed
p53 functionality: N/A
Telomere Mechanism: N/A
ALK: N/A
RNAseq: N/A
WES:

Growth Conditions: Please see Protocols section at <https://www.cccells.org/protocols.php>
5% CO₂, 20% O₂, 37.0°C

Media Formulation: Please see Protocols section at <https://www.cccells.org/protocols.php>
Cells are grown in a base medium of Iscove's Modified Dulbecco's Medium plus the following supplements (to a final concentration): 20% Fetal Bovine Serum, 4mM L-Glutamine, 1X ITS (5 µg/mL insulin, 5 µg/mL transferrin, 5 ng/mL selenous acid)

Doubling Time: N/A
Growth Properties: N/A

STR Profile: May be obtained at <https://strdb.cccells.org/>
Notes: None

All COG Repository cell lines are antibiotic-free, mycoplasma-free, and cryopreserved in 50% FBS / 7.5% DMSO. Each vial label contains the cell line name, passage number, total viable cell count (usually 5-10e6), the overall cell viability, and date frozen. All cell lines are validated with original patient sample by STR analysis



Cell Line Data Sheet for CHLA-44

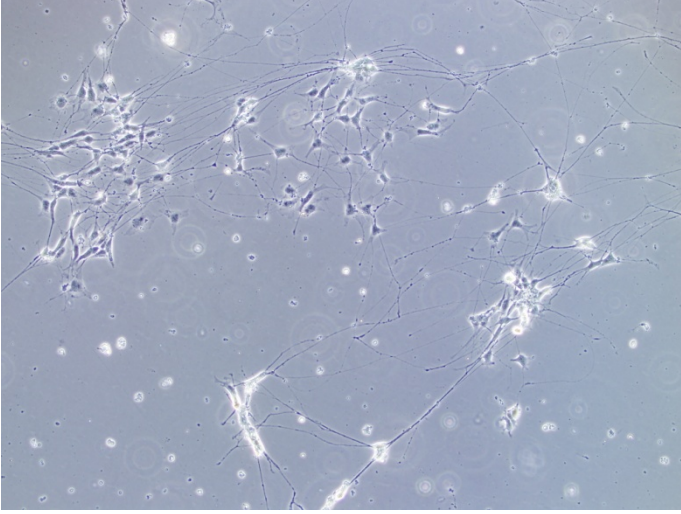
Cell Line Name: CHLA-44

References:

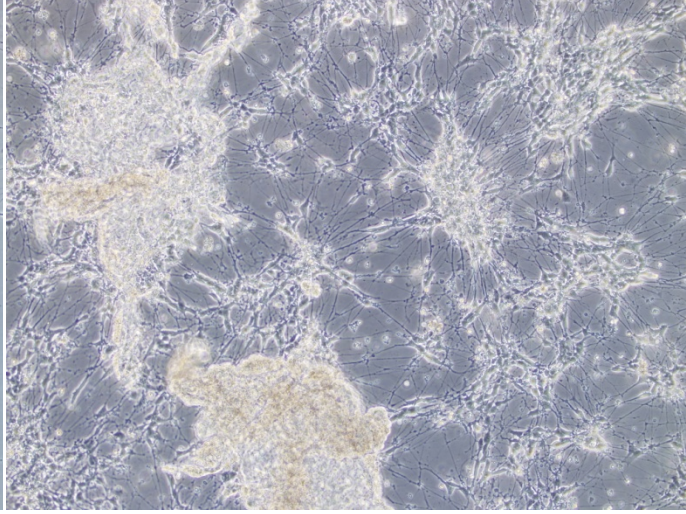
Cell Line Data Sheet for CHLA-44

Cell Line Name: CHLA-44

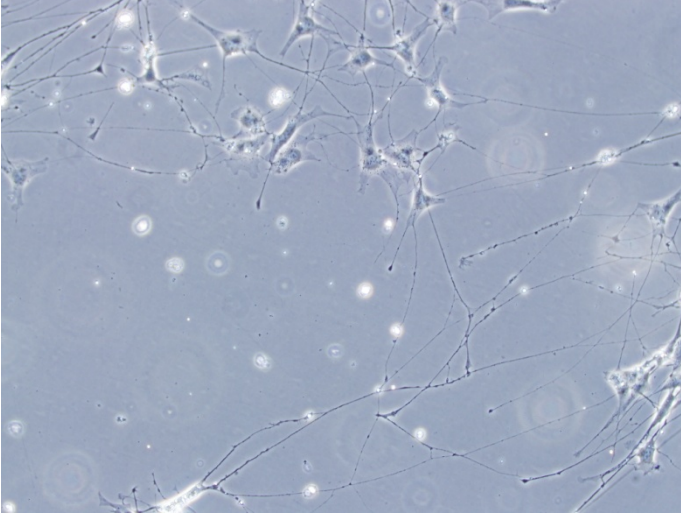
(10x Magnification)



(10x Magnification)



(20x Magnification)



(20x Magnification)

