

---

## Cell Line Data Sheet for COG-N-618

---

**Cell Line Name:** COG-N-618

**Disease:** Neuroblastoma  
**Phase of Therapy:** Progressive Disease (Post-XRT)  
**Treatment:** ANBL00B1 (20150616)  
**Disease Stage:** 4  
**Source of Culture:** Left Bone Marrow  
**Primary Tumor Site:** Suprarenal Gland  
**Date Established:** May 2016 (surgery February 2016)

**MYCN Status:**  
**TH expression:**  
**p53 status:**

**Gender:** Male  
**Age:** 990 days  
**Race:** NA

**Growth Conditions:** Please see Protocols section at <https://www.cccells.org/protocols.php>  
5% CO<sub>2</sub>, 20% O<sub>2</sub>, 37.0°C

**Media Formulation:** Please see Protocols section at <https://www.cccells.org/protocols.php>  
Cells are grown in a base medium of Iscove's Modified Dulbecco's Medium plus the following supplements (to a final concentration):  
20% Fetal Bovine Serum, 4mM L-Glutamine,  
1X ITS (5 µg/mL insulin, 5 µg/mL transferrin, 5 ng/mL selenous acid)

**Doubling Time:** 20%O<sub>2</sub> – 102 hours      5%O<sub>2</sub> – 57 hours      2%O<sub>2</sub> – 131 hours  
**Morphology:**  
**Growth Properties**

**STR Profile:** May be obtained at <https://strdb.cccells.org/>

**Notes:** The Childhood Cancer Repository has a matching hypoxic cell line grown at 5% O<sub>2</sub> available from this same patient – COG-N-618h.  
The Childhood Cancer Repository has a matching hypoxic cell line grown at 2% O<sub>2</sub> available from this same patient – COG-N-618h2.  
The Childhood Cancer Repository has a matching PDX available from this same patient – COG-N-618x.  
The Childhood Cancer Repository has matching hypoxic cell lines and PDX established from this same patient's right bone marrow – COG-N-619.

---

## Cell Line Data Sheet for COG-N-618

---

Cell Line Name: COG-N-618

References:

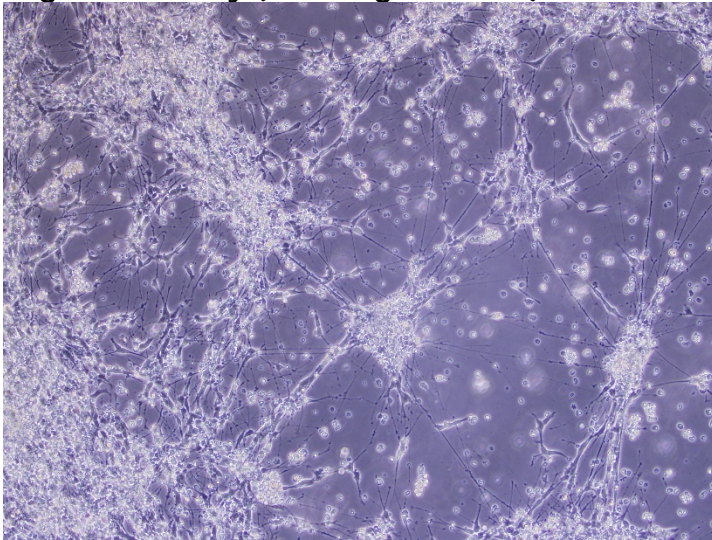
---

## Cell Line Data Sheet for COG-N-618

---

Cell Line Name: COG-N-618

High confluency (10x magnification)



High confluency (20x magnification)

