

Cell Line Data Sheet for COG-N-585

Cell Line Name: COG-N-585

Disease: Neuroblastoma
Phase of Therapy: Diagnosis
Treatment: ANBL00B1 (20150921), ANBL09P1 (20150925)
Disease Stage: 4
Source of Culture: Left Bone Marrow
Primary Tumor Site: Suprarenal gland
Date Established: October 2015 (surgery September 2015)

MYCN Status:
TH expression:
p53 status:

Gender:
Age: 1091 days
Race: NA

Growth Conditions: Please see Protocols section at <https://www.cccells.org/protocols.php>
5% CO₂, 20% O₂, 37.0°C

Media Formulation: Please see Protocols section at <https://www.cccells.org/protocols.php>
Cells are grown in a base medium of Iscove's Modified Dulbecco's Medium plus the following supplements (to a final concentration):
20% Fetal Bovine Serum, 4mM L-Glutamine,
1X ITS (5 µg/mL insulin, 5 µg/mL transferrin, 5 ng/mL selenous acid)

Doubling Time: 20% O₂ - hours 5%O₂ – hours 2%O₂ – hours
Morphology: Adherent
Growth Properties

STR Profile: May be obtained at <https://strdb.cccells.org/>

Notes: The Childhood Cancer Repository has a matching hypoxic cell line grown at 5% O₂ available from this same patient – COG-N-585h.
The Childhood Cancer Repository has a matching hypoxic cell line grown at 2% O₂ available from this same patient – COG-N-585h2.
The repository has matching hypoxic cell lines obtained at diagnosis from the left bone marrow of same patient – COG-N-586.

Cell Line Data Sheet for COG-N-585

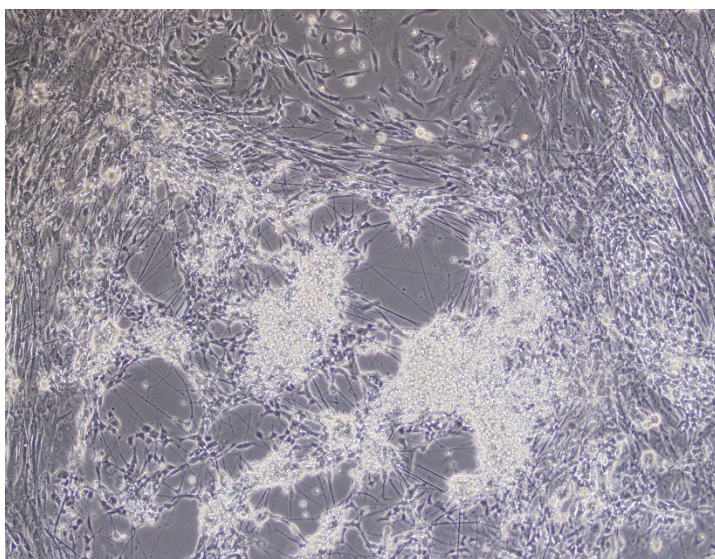
Cell Line Name: COG-N-585

References:

Cell Line Data Sheet for COG-N-585

Cell Line Name: COG-N-585

High confluency (10x magnification)



High confluency (20x magnification)

