

## Cell Line Data Sheet for COG-N-577

**Cell Line Name:** COG-N-577

**Disease:** Neuroblastoma  
**Phase of Therapy:** Progressive Disease (Post-Mortem)  
**Treatment:** ANBL00B1 (20101108), ACCL05C1 (20101228), ACCL0431 (20101228), ANBL0032 (20110623), AEPI07N1 (20111107)  
**Disease Stage:** 3  
**Source of Culture:** Post-Mortem Blood  
**Primary Tumor Site:** Periadrenal Tissue  
**Date Established:** September 2015 (surgery July 2015)

**MYCN Status:**

**TH expression:**

**p53 status:**

**Gender:**

**Age:** 840 days

**Race:** NA

**Growth Conditions:** Please see Protocols section at <https://www.cccells.org/protocols.php>  
5% CO<sub>2</sub>, 20% O<sub>2</sub>, 37.0°C

**Media Formulation:** Please see Protocols section at <https://www.cccells.org/protocols.php>  
Cells are grown in a base medium of Iscove's Modified Dulbecco's Medium plus the following supplements (to a final concentration): 20% Fetal Bovine Serum, 4mM L-Glutamine, 1X ITS (5 µg/mL insulin, 5 µg/mL transferrin, 5 ng/mL selenous acid)

**Doubling Time:** 20%O<sub>2</sub> – hours      5%O<sub>2</sub> – hours      2%O<sub>2</sub> – hours

**Morphology:** Adherent

**Growth Properties**

**STR Profile:** May be obtained at <https://strdb.cccells.org/>

**Notes:** The Childhood Cancer Repository has a matching hypoxic cell line grown at 5% O<sub>2</sub> available from this same patient – COG-N-577h.

The Childhood Cancer Repository has a matching hypoxic cell line grown at 2% O<sub>2</sub> available from this same patient – COG-N-577h2.

---

## Cell Line Data Sheet for COG-N-577

---

**Cell Line Name:** COG-N-577

**References:**

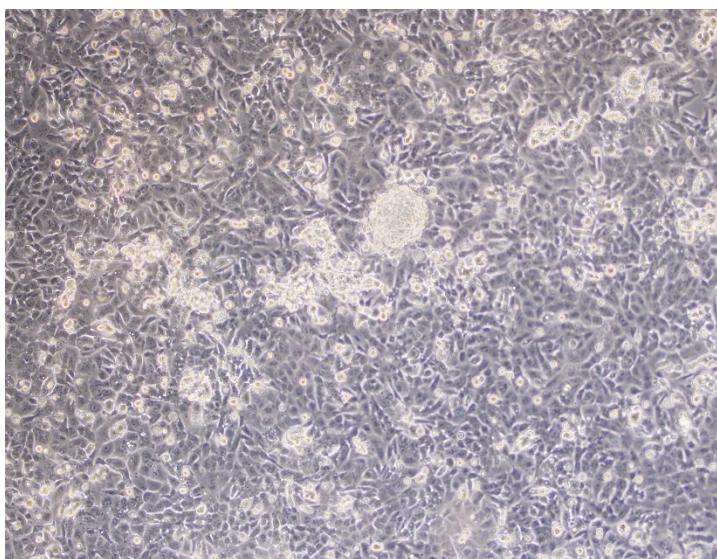
---

## Cell Line Data Sheet for COG-N-577

---

Cell Line Name: COG-N-577

High confluency (10x magnification)



High confluency (20x magnification)

