

Cell Line Data Sheet for COG-N-637

Cell Line Name: COG-N-637

Disease: Neuroblastoma
Phase of Therapy: Diagnosis
Treatment: ANBL00B1 (20160823), ACCL1034 (20170124)
Disease Stage: 4
Source of Culture: Left Bone Marrow
Primary Tumor Site: Abdomen, NOS
Date Established: September 2016 (surgery August 2016)

MYCN Status:
TH expression:
p53 status:

Gender:
Age: 732 days
Race: NA

Growth Conditions: Please see Protocols section at <https://www.cccells.org/protocols.php>
 5% CO₂, 20% O₂, 37.0°C

Media Formulation: Please see Protocols section at <https://www.cccells.org/protocols.php>
 Cells are grown in a base medium of Iscove's Modified Dulbecco's Medium plus the following supplements (to a final concentration):
 20% Fetal Bovine Serum, 4mM L-Glutamine,
 1X ITS (5 µg/mL insulin, 5 µg/mL transferrin, 5 ng/mL selenous acid)

Doubling Time: 20% O₂ - hours 5% O₂ – hours 2% O₂ – hours
Morphology:
Growth Properties

STR Profile: May be obtained at <https://strdb.cccells.org/>

Notes: The Childhood Cancer Repository has a matching hypoxic cell line grown at 5% O₂ available from this same patient – COG-N-637h.
 The Childhood Cancer Repository has a matching hypoxic cell line grown at 2% O₂ available from this same patient – COG-N-637h2.
 The Childhood Cancer Repository has matching hypoxic cell lines and PDX established from this same patient's solid tumor– COG-N-636.
 The Childhood Cancer Repository has matching hypoxic cell lines established from this same patient's right bone marrow– COG-N-638.

Cell Line Data Sheet for COG-N-637

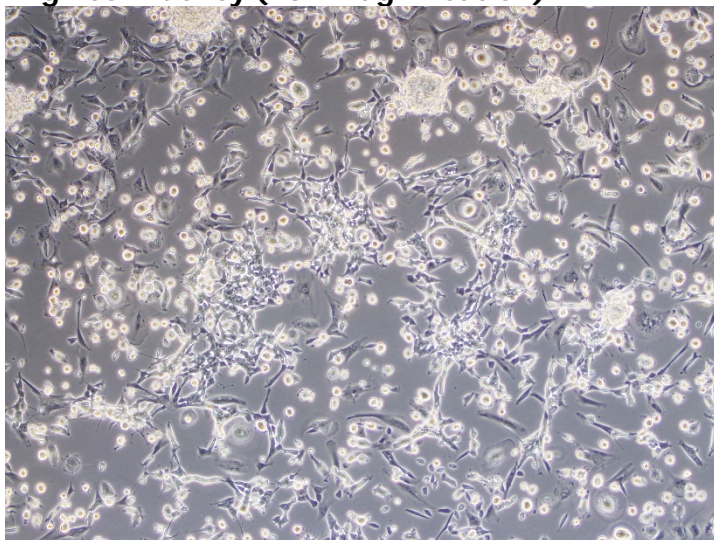
Cell Line Name: COG-N-637

References:

Cell Line Data Sheet for COG-N-637

Cell Line Name: COG-N-637

High confluency (10x magnification)



High confluency (20x magnification)

